

California Summer Meal Program Coalition



What is a Summer Food Service Program Sponsor?

Laurie Pennings

Manager, Community Nutrition Programs, Nutrition Services Division, California Department of Education





Expanding Access to Summer Meals



Laurie Pennings, MS, RD
Nutrition Services Division
lpennings@cde.ca.gov
916-324-7133

CALIFORNIA DEPARTMENT OF EDUCATION
Tom Torlakson, State Superintendent of Public Instruction



Tom Torlakson
State Superintendent
of Public Instruction

School's Out... Is Hunger In?

Three million kids in California participate in the National School Lunch Program during the school year. Let's not let kids go hungry during the summer!





Tom Torlakson
State Superintendent
of Public Instruction

2 Summer Meal Programs

- 1) Summer Food Service Program
- 2) Seamless Summer Feeding Option



Child and Adult Care Food Program At Risk, Afterschool Meals

(only available during the summer months to agencies in an area with a Year Round School and participating in an afterschool program.)



Tom Torlakson
State Superintendent
of Public Instruction

Reimbursement for Meals/Snacks

All three programs reimburse agencies for meals and snacks that are provided free to children in low income areas.





Tom Torlakson
State Superintendent
of Public Instruction

Who is Eligible to be a Sponsor?

- Public or private non-profit schools (Seamless or SFSP)
- Private non-profits with a 501 (c) (3)
- Public or private non-profit residential camps
- County, state or federal government entities





Tom Torlakson
State Superintendent
of Public Instruction

Locations for SFSP Sites

Anywhere kids congregate!
For example, Boys and Girls Clubs,
YMCA's...





Tom Torlakson
State Superintendent
of Public Instruction

Locations for SFSP Sites (cont.)

...Youth Sports Programs...





Tom Torlakson
State Superintendent
of Public Instruction

Locations for SFSP Sites (cont.)

...Churches, Libraries, Apartment
complexes...





Tom Torlakson
State Superintendent
of Public Instruction

Reimbursement Comparison

Meal Type	SFSP 1/1/11 – 12/31/11		Seamless Summer (through June 30,2011)	
	Self Prep or Rural	Vended or Urban	Basic	Needy
Breakfast				
Federal \$	\$1.88	\$1.845	\$1.4800	\$1.7600
State \$	NA	NA	\$0.2195	\$0.2195
Total Brkfst	\$1.88	\$1.845	\$1.6995	\$1.9795
Lunch/ Supper			< 60%	60% or >
Federal \$	\$3.2925	\$3.2375	\$2.7200	\$2.7400
State \$	NA	NA	\$0.2195	\$0.2195
Commodity * \$	\$0.0150	\$0.0150	\$0.2600	\$0.2600
Total Lunch	\$3.3075	\$3.2525	\$3.1995	\$3.2195
Snack	\$0.775	\$0.7575	\$0.7400	



Tom Torlakson
State Superintendent
of Public Instruction

Differences Between SFSP and SSFO

A comprehensive comparison matrix is located at the California Department of Education's Web site at:

http://www.cde.ca.gov/ls/nu/sf/comp_matrix.asp



Tom Torlakson
State Superintendent
of Public Instruction

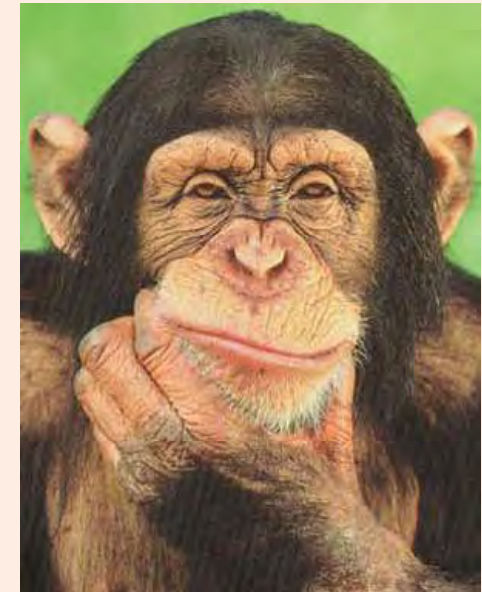
To Be or Not to Be... A Sponsor or a Site?

Sponsors:

- Must apply with the CDE
- Accept the administrative and financial responsibilities

Sites:

- Receive, serve and report meals to the sponsoring agency.





Tom Torlakson
State Superintendent
of Public Instruction

How to find a Sponsor

An agency that wants to be an SFSP site must find a sponsoring agency in their area.

2010 Summer Meal Sponsor & Sites are posted:

<http://www.cde.ca.gov/ds/>



Tom Torlakson
State Superintendent
of Public Instruction

Sponsor Responsibilities

Must have financial and administrative ability to oversee all aspects of the program.





Tom Torlakson
State Superintendent
of Public Instruction

Required Staffing

Sponsor Level

- Program Director
- Monitors
- Bookkeeper

Site Level

- Site Supervisor (one per site)



Tom Torlakson
State Superintendent
of Public Instruction

Financial Capability



Must have other finances to cover SFSP expenses until reimbursed and to cover any excess costs.



Tom Torlakson
State Superintendent
of Public Instruction

Sponsor's Administrative Responsibilities

- Attend mandatory SFSP training
(not required for SSFO)



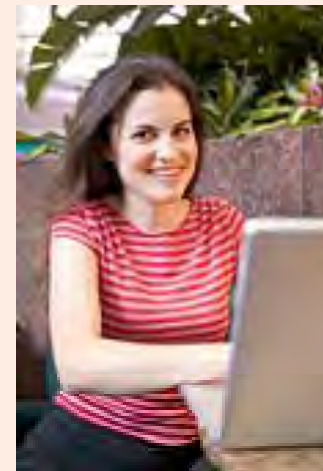
- Submit application
- Request approval for changes
- Provide guidance to staff



Tom Torlakson
State Superintendent
of Public Instruction

Sponsor's Administrative Responsibilities cont.

- Obtain meals for sites
- Monitor sites
- Submit claims for reimbursement





Tom Torlakson
State Superintendent
of Public Instruction

Sponsor Responsibilities cont.

Sponsors can either:

- Prepare their own meals
- Purchase complete meals from a food service vendor

(Sponsors must document how meals are obtained.)





Tom Torlakson
State Superintendent
of Public Instruction

Site Responsibilities

- Attend sponsor's annual training
- Store and distribute meals
- Keep daily records of meals served
- Supervise meal service

(You can use reliable volunteers!)





Tom Torlakson
State Superintendent
of Public Instruction

Steps to Become an SFSP Sponsor

1. Get screened by an SFSP specialist.
2. Obtain an Introduction packet.
3. Send in forms.
4. Obtain a Child Nutrition Information and Payment System (CNIPS) user ID and password from your SFSP specialist.



Tom Torlakson
State Superintendent
of Public Instruction

Steps cont.

5. Apply Online

- The Child Nutrition Information and Payment System – CNIPS!
- Make changes to your program online.
- Submit claims online – payment sent within 2-3 weeks.





Tom Torlakson
State Superintendent
of Public Instruction

Steps cont.

6. Attend Mandatory Training Sessions (I, II, and III)

Covers all SFSP requirements and options.

In-Person Training (Solano County):

May 6th – Session I, II, III

Webinars:

May 10th – Session III only (8:30 – 11:30)

May 17th – Sessions I, II, and III (8:30 – 4:30)

(FINAL OPPORTUNITY)

To Register, contact:

Mary Thomas, 916-327-2220, or

Mthomas@cde.ca.gov



Tom Torlakson
State Superintendent
of Public Instruction

Steps to Become an SFSP Sponsor cont.

7. Your SFSP specialist will visit your agency for a “preapproval visit”.





Tom Torlakson
State Superintendent
of Public Instruction

Steps to Become an SSFO Sponsor

- 1) NSLP Sponsors go into CNIPS
- 2) In Download Forms, print SSFO agreement.
- 3) Mail it to NSD with original signatures.



Tom Torlakson
State Superintendent
of Public Instruction

Sponsor Resources

USDA guidance resource materials:

<http://www.fns.usda.gov/cnd/Summer>

The Nutrition Services Division

Guidance resource materials:

<http://www.cde.ca.gov/ls/nu/sf/>



Tom Torlakson
State Superintendent
of Public Instruction

Questions?

SFSP Specialists:

Melissa Garza
916-322-5885

mgarza@cde.ca.gov

Dennis Arena
916-324-9073

darena@cde.ca.gov

Janeen Dodson
916-327-5865

jdodson@cde.ca.gov

Mary Thomas
916-327-2220

Mthomas@cde.ca.gov

SSFO Specialist:

Donna Reedy
916-327-5866

Dreedy@cde.ca.gov



Tom Torlakson
State Superintendent
of Public Instruction

The Child and Adult Care Food Program (CACFP) At Risk After School Component

- Available only during the school year **EXCEPT** for agencies in areas w/Year Round Schools.
- Must provide after school care with an education or enrichment component.
- Reimburses for a meal and a snack after school.
- Must be located in the attendance area of a school in which 50 percent of enrolled students are eligible for free or reduced-price meals.



Tom Torlakson
State Superintendent
of Public Instruction

Who is Eligible for the CACFP At Risk After School Program?

- Public, Private non-Profit, or For-Profit Organizations
- For profit organizations **must be operating a CACFP child care center in which 25% of children receive subsidized child care OR 25% are income eligible for free/reduced-price meals.**



Tom Torlakson
State Superintendent
of Public Instruction

Minimal Requirements

- Keep a roster
- Have a menu with portion sizes
- Serve required meal components



❖ Sample menus available!



Tom Torlakson
State Superintendent
of Public Instruction

Meal Components

Breakfast

- Milk – 1 cup
- Vegetable, Fruit, or Full Strength Juice – $\frac{1}{2}$ cup
- Grain/Bread – 1 slice

Lunch or Supper

- Same as above, except $\frac{3}{4}$ cup veg or fruit, instead of $\frac{1}{2}$ cup, and
- Additional 2 oz. meat/meat alternate



Tom Torlakson
State Superintendent
of Public Instruction

Snack Components

Serve two of the four components:

- Milk – 1 cup
- Veg, Fruit, or Full Strength Juice-
 $\frac{3}{4}$ cup
- Grain/Bread – 1 slice
- Meat/Meat Alternate 1 oz



Tom Torlakson
State Superintendent
of Public Instruction

At Risk After School Reimbursement



Breakfast (w state meal)	\$1.64
Lunch (w/state meal and cash in lieu)	\$3.08
Supper (w/cash in lieu)	\$2.92
Snack	\$0.74



Tom Torlakson
State Superintendent
of Public Instruction

Streamlined Application for Schools

- No assessment of financial viability or management plan required!





Tom Torlakson
State Superintendent
of Public Instruction

Questions About CACFP At Risk Afterschool Meals?

Laurie Pennings, MS, RD
Nutrition Services Division
Lpennings@cde.ca.gov
916-324-7133



Tom Torlakson
State Superintendent
of Public Instruction

Thank You for Providing Summer Meals!

Our kids deserve it!

